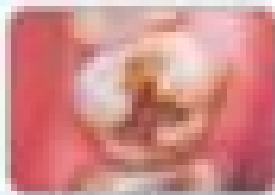


CLEARFIL™ AP-X Flow

BROAD APPLICABILITY WITH EASY HANDLING PROPERTY

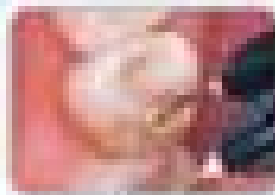
- CLEARFIL™ AP-X Flow is a flowable, micro-leakage (ML) light cured, orthodontically sensitive composite resin.
- CLEARFIL™ AP-X Flow offers optimal consistency for controlled application and flowability.
- The light consistency is essential for the efficacy of a flowable composite. CLEARFIL™ AP-X Flow provides the desired sufficient flow with the material benefits and the same ergonomics and comfortable handling. It fully satisfies the demand.
- CLEARFIL™ AP-X Flow is characterized by very high filler loading (84 wt%), the excellent strength and wear resistance, even for years after restoration.



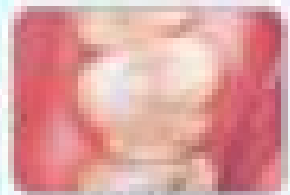
1. Preparation



2. Using the resin



3. Shaping and curing resin



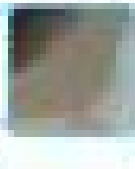
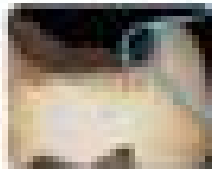
4. Polishing and finishing

CLINICAL APPLICATIONS

- Cervical lesions
- Direct restorations for anterior and posterior teeth (Class I - III) including cervical lesions, root carious
- Apply liner and base for direct restorations, and indirect restorations using the 3D generation Direct Bonding technique. The 3D generation Direct Bond offers a quality dentin immediately after the preparation and before the final restoration.

KEY 1

A clear visible case of CLEARFIL™ AP-X Flow used for curing in an anterior tooth. It shows light to the bottom of the cavity because it is able to "wet out" in deep and to be readily cured.



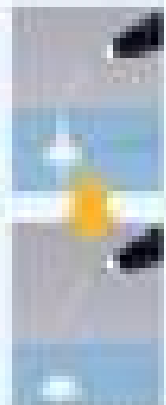
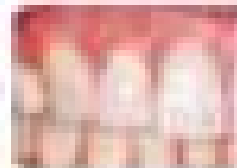
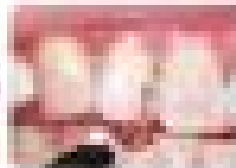
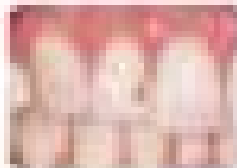
KEY 2

CLEARFIL™ AP-X Flow that was a flowable composite for bonding the restorations effectively.



KEY 3

Restoration shows full retained coverage and separation during the finishing.



Flowable AP-X Flow resin for deep penetration

SYRINGE DESIGN

The easy shaped design made for correct angle of the tip.

Resin is precisely filled & good gap fit with the substrate application.



The syringe is CLEARFIL™ AP-X Flow for the application through the gap and filling. The gap under tooth surface is easy.

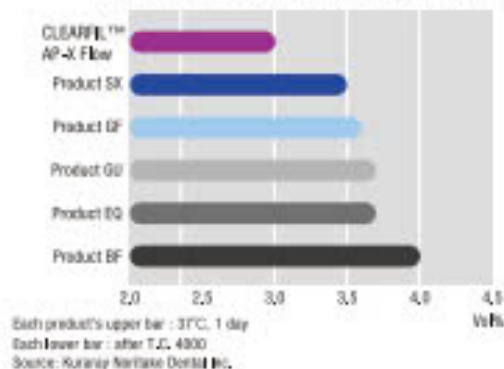
COMPONENTS

- CLEARFIL™ AP-X Flow boasts new filler technology, obtained by treating the filler particles with Kuraray's proprietary new Nano Dispersion Technology. The result is a resin matrix consisting of monomers, nano fillers and micro fillers, reinforcing with a high filler load of 81 wt% (62 vol%), delivers a flowable composite with extremely low polymerisation shrinkage.
- CLEARFIL™ AP-X Flow exhibits impressive physical properties, while maintaining excellent aesthetic qualities.
- It has lowest polymerization shrinkage of the current flowables. (The graph below left)
- CLEARFIL™ AP-X Flow shows the highest flexural strength among the tested flowable composites. (The graph below right)

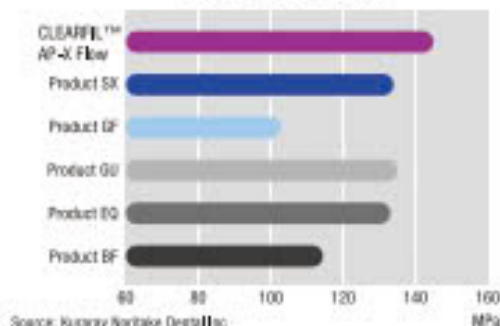


Scanning Electron

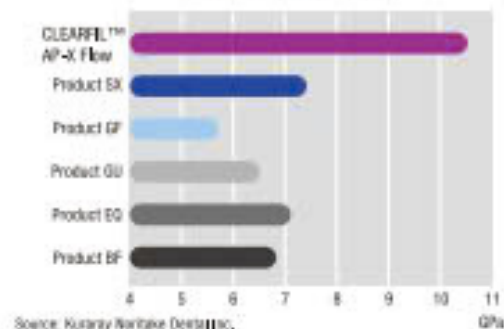
Volumetric polymerization shrinkage



Flexural Strength



Flexural Modulus

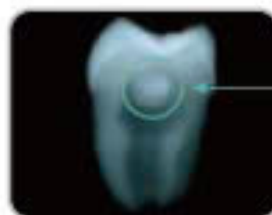


RADIOPACITY

- High radiopacity for accurate detection



CLEARFIL™ AP-X Flow
290% of aluminium (ISO 4049)



Competitor's Product



- #3230-WD CLEARFIL™ AP-X Flow (A1)
- #3231-WD CLEARFIL™ AP-X Flow (A2)
- #3232-WD CLEARFIL™ AP-X Flow (A3)
- #3233-WD CLEARFIL™ AP-X Flow (A3.5)
- #3234-WD CLEARFIL™ AP-X Flow (A4)
- #3236-WD CLEARFIL™ AP-X Flow (B2)
- #3238-WD CLEARFIL™ AP-X Flow (C3)
- #3241-WD CLEARFIL™ AP-X Flow (D4)
- #3242-WD CLEARFIL™ AP-X Flow (DA3)
- #3245-WD CLEARFIL™ AP-X Flow Needle Tip 20pcs

- Read the instruction for use supplied with the product before use.
- The measurement data contained in this brochure are obtained by the results of tests performed by Kuraray Noritake Dental Inc.
- The colors of the product pastes and hardened products shown in this brochure may vary from the actual colors.
- The specifications and appearance of the product are subject to change without notice.

 Kuraray Noritake Dental Inc.

Ote Center Bldg.,
1-1-3, Otemachi, Chiyoda-Ku, Tokyo 100-0004, Japan
Website : <http://www.kuraraynoritake.com>

*CLEARFIL™ is a trademark of Kuraray Co., Ltd.