

PRODUCT CATALOG

Product Catalog

INVENTIVE DENTAL SOLUTIONS

Tokuyama Corporation, our parent company, has a 90-year history as a diversified chemical producer. Over the years, the product range has expanded to include a wide array of special chemicals, including dental products. This department eventually became known as Tokuyama Dental Corporation.

Tokuyama began developing and manufacturing dental materials 30 years ago. Tokuyama Dental Corporation's philosophy, inventive dental solutions, is our commitment to create quality products and provide solutions for the dentist. Our innovative chemical technologies, which are inherited from our parent company, continue to grow independently. As we substantiate ourselves as an industry leader, our forward-thinking researchers are developing new technology to revolutionize the global dental industry.

Tokuyama Dental Corporation has an established track record for its reliner materials, TOKUYAMA REBASE II and SOFRELINER. These products command a majority of the market share in their categories. We also produce bonding agents, composites and cements. In 2010, Tokuyama Dental Corporation was awarded by THE DENTAL ADVISOR for Top Product Awards in 4 categories: Top 7th-generation Bonding Agent, Top Composite, Top Flowable Composite and Top Soft Denture Reline Material.

We want to make it easy to purchase our products. Please contact your dealer for purchasing. Tokuyama Dental Corporation is dedicated to providing superior customer service. If you have any questions, please contact us.



Tokuyama Factory (Tokuyama Corp.)



Tsukuba R & D Laboratory



Kashima Factory

C O N T E N T S

RESTORATIVES

ESTELITE Σ QUICK	3
ESTELITE FLOW QUICK	5
ESTELITE FLOW QUICK High Flow	6
PALFIQUE ESTELITE LV	6
ESTELITE POSTERIOR	7

ADHESIVES

TOKUYAMA BOND FORCE	8
ONE-UP BOND F Plus	9

CEMENTS

BISTITE II DC	10
METALTITE	11
TOKUSO CERAMIC PRIMER	11
TOKUYAMA M-Bond	12
TOKUYAMA IONOTITE F	12

ORAL CARE

TOKUYAMA SHIELD FORCE PLUS	13
----------------------------	----

DENTURE RELINES

TOKUYAMA REBASE II	14
SOFRELINER TOUGH M(Medium)/S(Soft)	15
SOFRELINER MS/S	16
SILICONE REMOVER	17
TOKUSO REBASE MR.BOND	17

ESTELITE Σ QUICK



Universal Restorative Resin Composite



3 SYRINGE KIT



SYRINGE SYSTEM KIT



PLT INTRO KIT

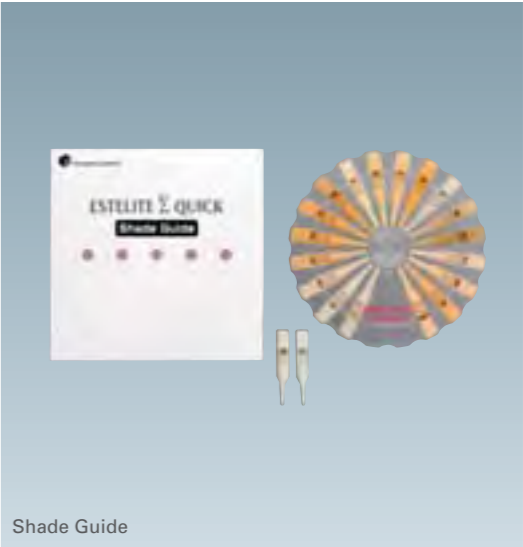


PLT MINI KIT



SYRINGE Refill

PLT Refill



Shade Guide

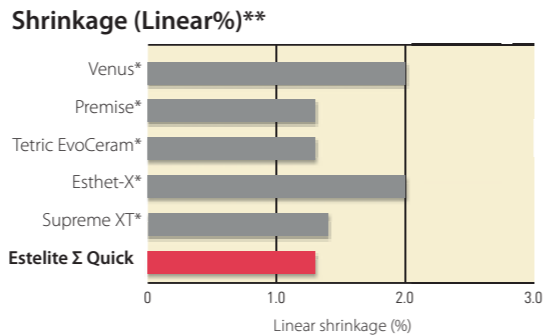
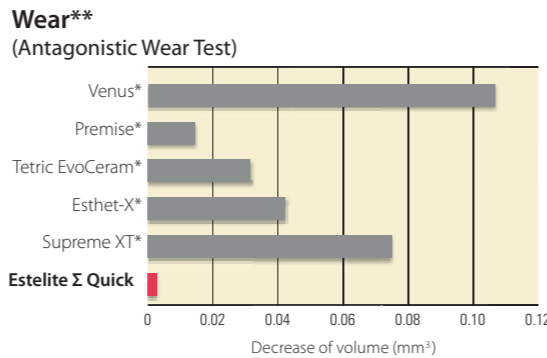
INDICATIONS

- Anterior and posterior restorations
- Composite veneer
- Diastema closure
- Composite/porcelain repair

BENEFITS

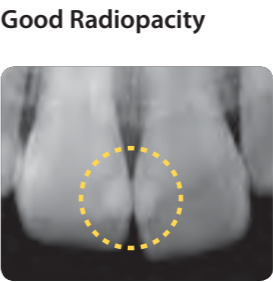
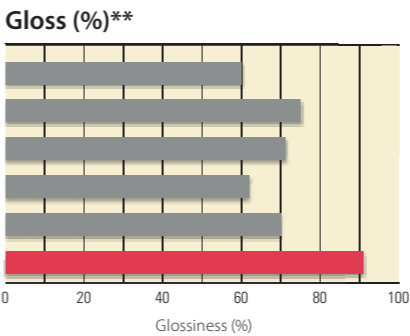
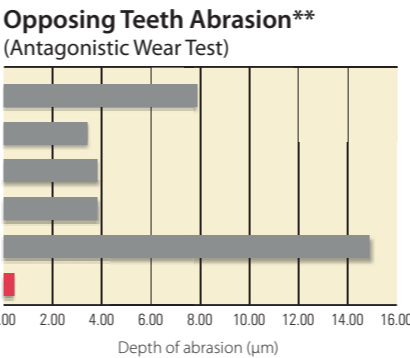
- Extended working time (90 sec.)
- Reduced curing time (10 sec.)
- Outstanding polishability
- High gloss retention over time
- Wide shade matching range "Chameleon effect"
- High wear resistance
- Less wear to opposing teeth
- Good radiopacity
- Minimal shrinkage
- Available in 20 shades
- Provided in both SYRINGE and PLT (Pre Loaded Tip)

TECHNICAL INFORMATION

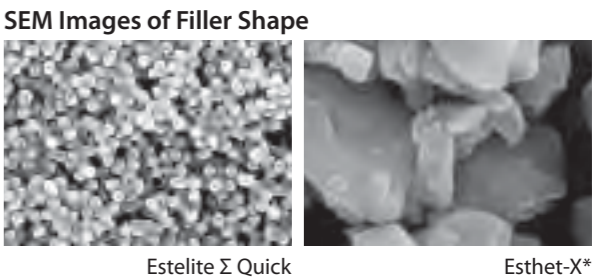
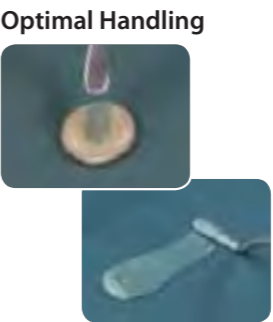


Physical Properties **

Flexural Strength	115 MPa
Flexural Modulus	8.7 GPa
Compressive Strength	400 MPa



Case courtesy of Toshio Kanamura, DDS



** Source: Tokuyama Dental R&D
* Not a registered trademark of Tokuyama Dental

PRODUCTS PACKAGES AVAILABLE

SYRINGE SYSTEM KIT: 1 Syringe (3.8g) of each shade: A1, A2, A3, A3.5, OA3, OPA2, 1 Syringe ESTELITE FLOW QUICK (1.8g) of each shade: A2, A3, OA3, 27 tips; 1 Bottle TOKUYAMA BOND FORCE (5mL), Dispensing well, 50 applicators, Shade guide

SYRINGE INTRO KIT: 1 Syringe (3.8g) of each shade: A1, A2, A3, A3.5, OA2, OPA2, 1 Bottle TOKUYAMA BOND FORCE (1mL), Dispensing well, 25 applicators, Shade guide

3 SYRINGE KIT: 1 Syringe (3.8g) of each shade: A2, A3, OA3

PLT INTRO KIT: 10 PLTs (0.2g each) of each shade: A2, A3; 5 PLTs (0.2g each) of each shade: A1, A3.5, OA3, OPA2; 1 Bottle TOKUYAMA BOND FORCE (1mL), Dispensing well, 25 applicators; Shade guide

PLT MINI KIT: 5 PLTs (0.2g each) of each shade: A1, A2, A3, OA2

SYRINGE Refill: 1 Syringe (3.8g)

PLT Refill: 20 PLTs (0.2g each)

Shade Guide

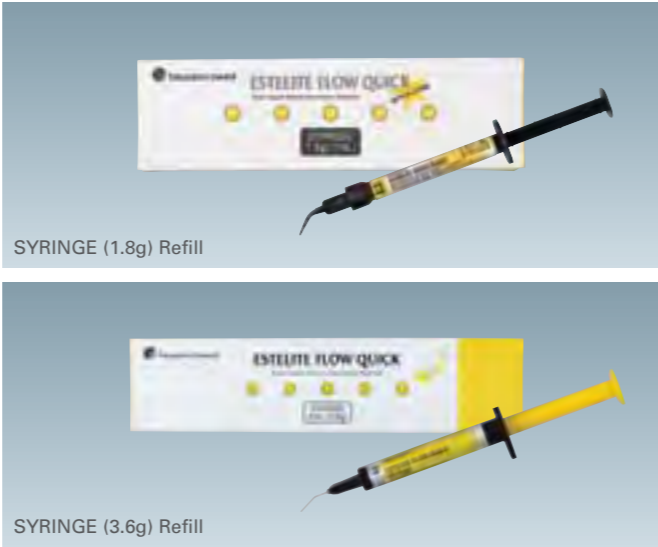
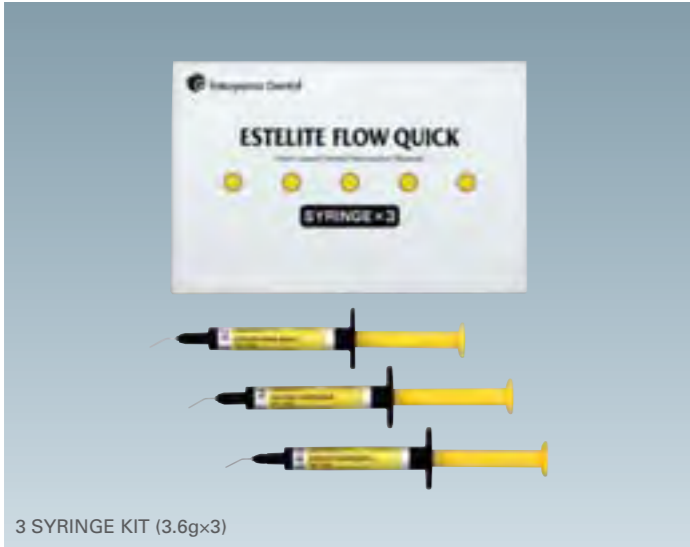
AVAILABLE SHADES (20 shades)

Standard (14)	A1	A2	A3	A3.5	A4	A5	B1	B2	B3	B4	C1	C2	C3	CE(Inc.)
Bleach (2)	BW	WE												
Opalescent (3)														
Opaque (1)														



ESTELITE FLOW QUICK

Esthetic and Quick-Curing Flowable Resin Composite



INDICATIONS

- Direct anterior and posterior restorations (particularly for small/shallow/tunnel shaped cavities)
- As the first layer of direct restorations
- Blocking out cavity undercuts before fabricating indirect restorations
- Repair of porcelain/composite

BENEFITS

- Very fast curing
- Extended working time (90 sec.)
- Outstanding esthetics
- Superior mechanical strengths
- Excellent polishability
- Very low shrinkage
- Exceptional surface gloss
- Wide shade matching range/"Chameleon effect"
- Excellent handling
- Optimal radiopacity
- Minimal color change after curing
- More shade variations (17 shades)

Physical Properties

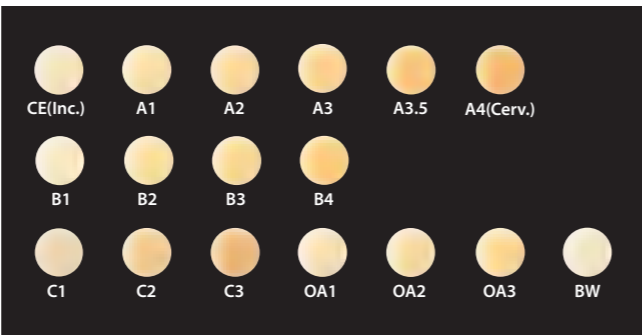
Flexural Strength	156 MPa
Flexural Modulus	8.5 GPa
Compressive Strength	391 MPa

Source: Tokuyama Dental R&D

PRODUCTS PACKAGES AVAILABLE

- 3 SYRINGE KIT (1.8g x 3):
1 Syringe (1.8g) of each shade: A2, A3, A3.5
- 3 SYRINGE KIT (3.6g x 3):
1 Syringe (3.6g) of each shade: A2, A3, A3.5
- SYRINGE (1.8g) Refill: 1 Syringe (1.8g)
- SYRINGE (3.6g) Refill: 1 Syringe (3.6g)

AVAILABLE SHADES (17 shades)



ESTELITE FLOW QUICK High Flow



Flowable Resin Composite



INDICATIONS

- See ESTELITE FLOW QUICK

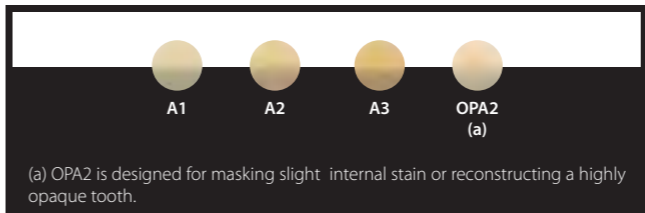
BENEFITS

- Ideal flowability for smooth cavity lining
- Large syringe and wing for easier dispensing
- Reliable physical strength
- Remarkable polishability, glossiness and color-matching
- Quick curing time
- Ample working time, 90 seconds under an ambient light

PRODUCTS PACKAGES AVAILABLE

SYRINGE (3.6g) Refill: 1 Syringe (3.6g)

AVAILABLE SHADES (4 shades)



(a) OPA2 is designed for masking slight internal stain or reconstructing a highly opaque tooth.

PALFIQUE ESTELITE LV



Flowable Resin Composite

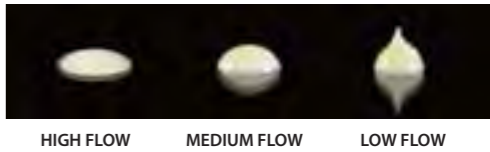


INDICATIONS

- See ESTELITE FLOW QUICK

BENEFITS

- Offering 3 different flowabilities
- Outstanding polishability, glossiness and color-matching
- High wear resistance
- Optimal radiopacity



PRODUCTS PACKAGES AVAILABLE

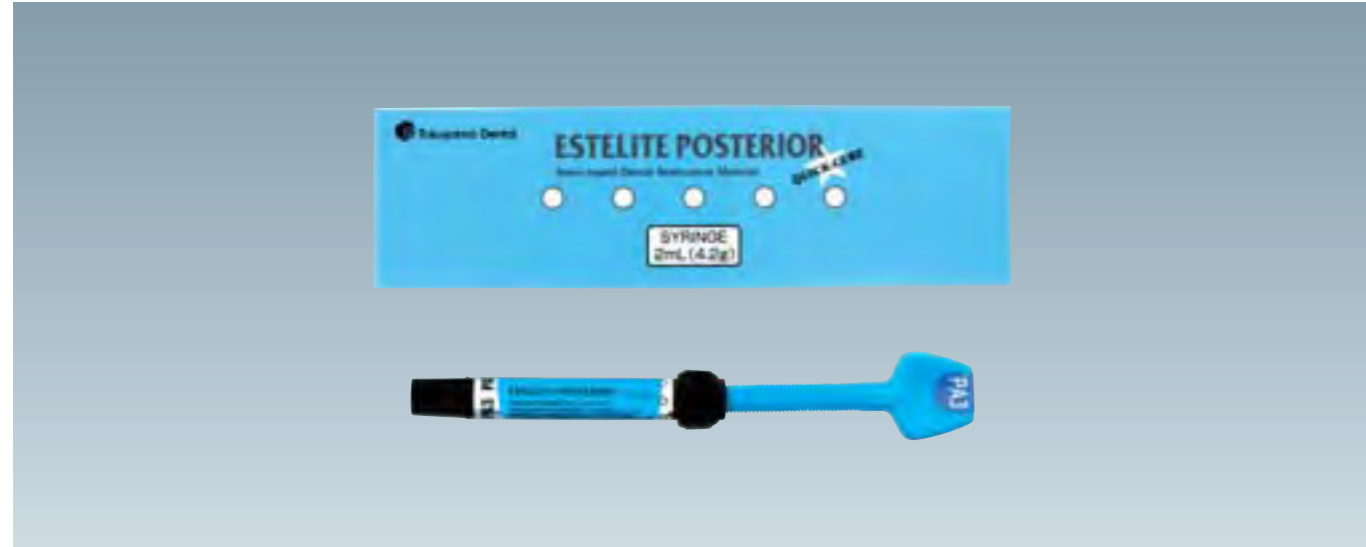
High Flow SYRINGE Refill: 1 Syringe (3g)
Medium Flow SYRINGE Refill: 1 Syringe (3g)
Low Flow SYRINGE Refill: 1 Syringe (3g)

AVAILABLE SHADES (4 shades)



ESTELITE POSTERIOR

Resin Based Dental Restorative Material for Posterior



INDICATIONS

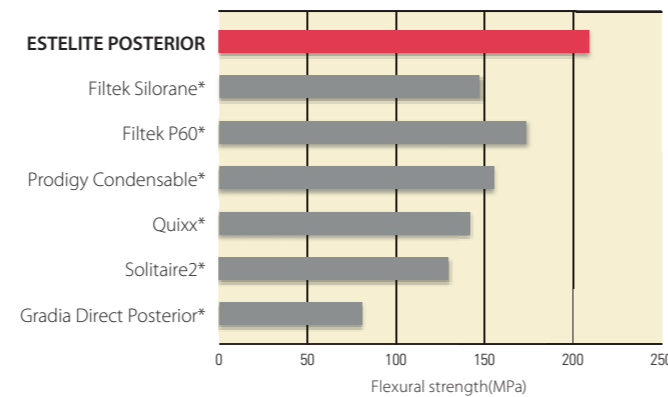
- Direct posterior restorations including the occlusal surface
- Repair of porcelain/composite

BENEFITS

- Ideal handling
 - Optimal stiffness, easy to shape, non-sticky
- Prominent physical strength
 - High flexural and compressive strength
- Exclusive posterior shade availability
- Quick curing time - 10 seconds with a halogen light
- Ample working time

TECHNICAL INFORMATION

Flexural Strength**



** Source: Tokuyama Dental R&D
* Not a registered trademark of Tokuyama Dental Corporation.

Physical Properties **

Flexural Strength	209 MPa
Flexural Modulus	20.2 GPa
Compressive Strength	443 MPa

PRODUCTS PACKAGES AVAILABLE

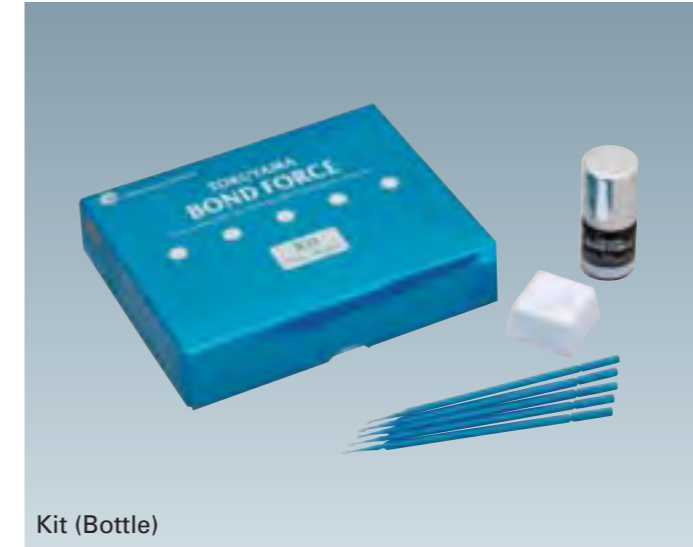
SYRINGE (4.2g) Refill: 1 Syringe (4.2g)

AVAILABLE SHADES (4 shades)



TOKUYAMA BOND FORCE

One Component Self-Etching Light-Cured Dental Adhesive



Kit (Bottle)



Standard Kit (Unit Dose)

INDICATIONS

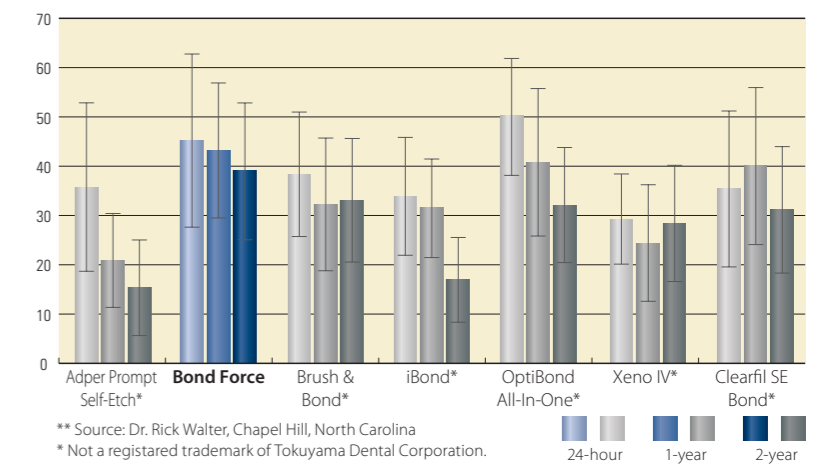
- Bonding of light- or dual-cured composite material to:
 - cut/uncut enamel,
 - cut/uncut dentin,
 - fractured porcelain/composite for repair.

BENEFITS

- Outstanding bond strength
- Designed for cut/uncut enamel and dentin
- Only 1 application required
- No etching, No rinsing
- No mixing
- Fluoride releasing
- Thin film thickness
- Less technique sensitive
- Available in both bottle and unit dose

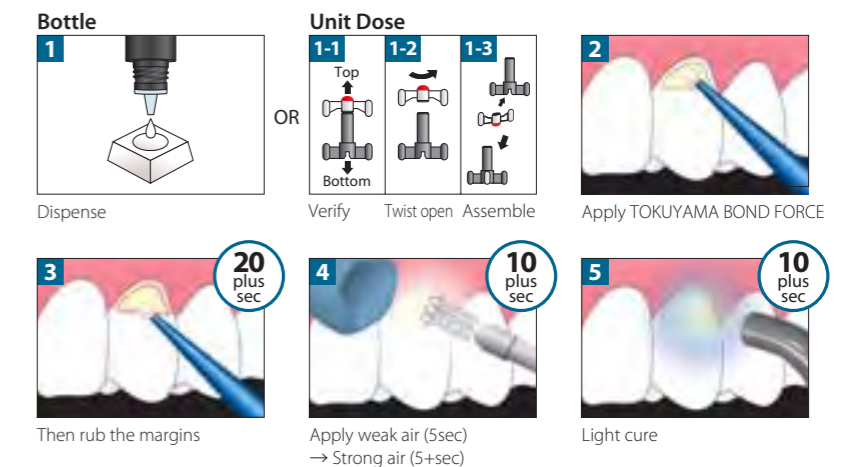
TECHNICAL INFORMATION

Microtensile Bond Strength (MPa) to Dentin**



** Source: Dr. Rick Walter, Chapel Hill, North Carolina
* Not a registered trademark of Tokuyama Dental Corporation.

CLINICAL PROCEDURE



PRODUCTS PACKAGES AVAILABLE

Kit: 1 Bottle (5mL), 50 Disposable applicators (superfine), Dispensing well

Refill: 1 Bottle (5mL)

Standard Kit: 50 Unit doses (0.1mL), 50 Disposable applicators (superfine)

ONE-UP BOND F Plus

Self-Etching & Light-Cured Dental Adhesive



INDICATIONS

- Direct light cured composite restorations
- Application on exposed cervical dentin and the root surface

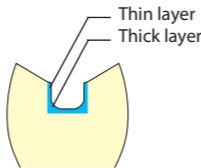
BENEFITS

- Visual confirmation of each step with built-in color coding
- Single application
- Fluoride releasing
- No etching, rinsing or drying
- New dispensing system

TECHNICAL INFORMATION

Generate high Bond Strength for either thin or thick bonding layers

The thickness of the bonding layer applied varies depending on the morphology of the cavity. ONE-UP BOND F Plus is unlikely to be influenced by the thickness of the bonding layer and gives a strong bond strength.



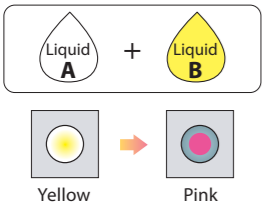
Stable and high Bond Strength and excellent Durability

Initial Bonding Strength	Enamel	20.7MPa
	Dentin	24.2MPa
Thermal Cycle 3,000 times (4°C ↔ 60°C)	Enamel	21.1MPa
	Dentin	23.6MPa

Source: Tokuyama Dental R&D

CLINICAL PROCEDURE

1. Mixing A&B



2. Application (Rub for 10sec)



Air dry is not required

3. Light cure



Pink color is disappeared

PRODUCTS PACKAGES AVAILABLE

Kit: Bonding Agent A (5mL), Bonding Agent B (5mL), Dispenser, Mixing well, 50 Disposable applicator tips, Applicator handle

Refill: Bonding Agent A: Bottle (5mL), Dispenser
Bonding Agent B: Bottle (5mL)

Disposable Applicator Tip & Handle Set: 500 Disposable applicator tips, 4 Applicator handles

BISTITE II DC

Self-Etching & Dual-Cured Adhesive Resin Cement



INDICATIONS

- Cementation and bonding of precious metal, non-precious metal, cured composite resin, porcelain and ceramic prosthesis
- Repair of fractured porcelains fused to metal crowns and all ceramic restorations
- Cementation of acid etch bridges
- Cementation of resin composite core post systems and metal post and cores

BENEFITS

- Outstanding bond strength
- Low film thickness (10µm)
- Multiple shades availability
- Easy excess removal
- All inclusive kit
- Self-etching
- Eliminate tin plating

Physical Properties

Compressive Strength	348 MPa
Flexural Strength	109 MPa
Film Thickness	10 µm
Tensile Bond Strength	
Enamel	24.7 MPa
Dentin	17.3 MPa
Precious Metal	22.9 MPa
Ceramic	23.1 MPa

Source: Tokuyama Dental R&D

PRODUCTS PACKAGES AVAILABLE

Kit (Clear, Dentin or Ivory shade):

Bistite II Paste (A&B)/7g (3.5g each), Primer 1A (5mL), Primer 1B (5mL), Primer 2 (5mL), Air Barrier (6mL), TOKUSO CERAMIC PRIMER (A&B, 1mL each), METALTITE (1mL), Mixing pad, Spatula, Disposable brush & handle, Air Barrier dispensing tips

Refill: Paste (Clear, Dentin or Ivory): Syringe (A&B)/7g (3.5g each)

Primer 1A: Bottle (5mL)

Primer 1B: Bottle (5mL)

Primer 2: Bottle (5mL)

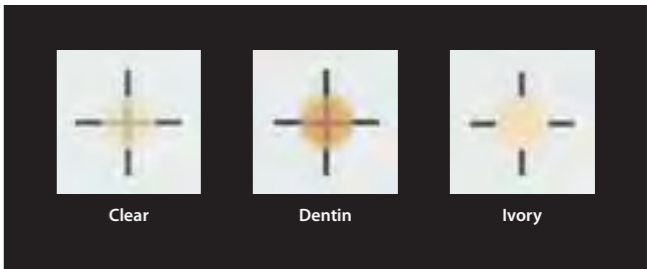
Air Barrier: Syringe (6mL) (w/Dispensing tip x 50)

Air Barrier dispensing tip: 50 tips

TOKUSO CERAMIC PRIMER (A&B): Primer A&B (5mL each)

METALTITE: Bottle (5mL)

AVAILABLE SHADES (3 shades)



METALTITE

2010
REALITY
★★★★★

Primer For Bonding Precious Metal To Resin



CLINICAL APPLICATIONS

- Cementation of precious metal inlays, onlays, crowns, bridges etc.
- Cementation of precious metal post and cores
- Repair of precious metal bonded porcelain in the mouth
- Repair of precious metal based dentures before acrylic is applied on the broken area
- Bonding of opaque resin to a precious metal base in fabricating a resin face crown indirectly or directly in the mouth

BENEFITS

- Elimination of tin plating
- Greatly improves bond between resins and precious metals

PRODUCTS PACKAGES AVAILABLE

METALTITE: Bottle (5mL)

TOKUSO CERAMIC PRIMER

2010
REALITY
★★★★★

Primer to enhance bonding between ceramics and resins



CLINICAL APPLICATIONS

- Repair of ceramic restorations
- Cementation of ceramic restorations

BENEFITS

- Greatly improves adhesion between ceramic and resin
- Contains a silane coupling agent

PRODUCTS PACKAGES AVAILABLE

TOKUSO CERAMIC PRIMER: Primer A&B (5mL each)

TOKUYAMA M-Bond

Self-etching Adhesive Resin Cement



INDICATIONS

- Temporary fixation of loose teeth
- Cementation of precious/non-precious metal crowns, inlays, onlays and bridges
- Cementation/repair of porcelain fused to precious metals (PFM)
- Cementation of precious metal posts and cores
- Cementation of all ceramic/porcelain/cured composite crowns, inlays, onlays, bridges and veneers

BENEFITS

- Exceptional bond strengths and durability
- Self-etching/No rinsing
- Extended working time & Shortened setting time
- No cool dish required

Tensile Bond Strength *

Enamel	24.6 MPa
Dentin	21.0 MPa
Precious Metal	23.2 MPa
Porcelain	22.6 MPa

PRODUCTS PACKAGES AVAILABLE

Kit: Powder (Clear, 3g), Powder (Ivory, 3g), Liquid (8mL), Primer A (3mL), Primer B (3mL), Mixing dish, Powder measuring spoon, Spatula, 2 Brush handles, 50 Disposable brush tips, 10 Disposable brush tips for Brush-on technique

Refill: Powder Clear/Ivory (3g), Liquid (8mL), Primer A (3mL) Primer B (3mL), Disposable brush tip: 100 tips
Disposable brush tip for Brush-on technique: 100 tips with a handle

TOKUYAMA IONOTITE F

Self-Adhesive Composite Ionomer Luting Cement



INDICATIONS

- Permanent cementation of
 - porcelain fused to metal (PFM) crowns and bridges
 - cast crowns and bridges with resin facings
 - metal inlays, onlays, crowns and bridges
 - cast posts

BENEFITS

- Excellent adhesion to precious metal and teeth
- Easy clean-up
- Easy handling
- Low water sensitivity
- Fluoride releasing
- Thin film thickness

Tensile Bond Strength *

Enamel	12.0 MPa
Dentin	8.7 MPa
Precious Metal	18.0 MPa

* Source: Tokuyama Dental R&D

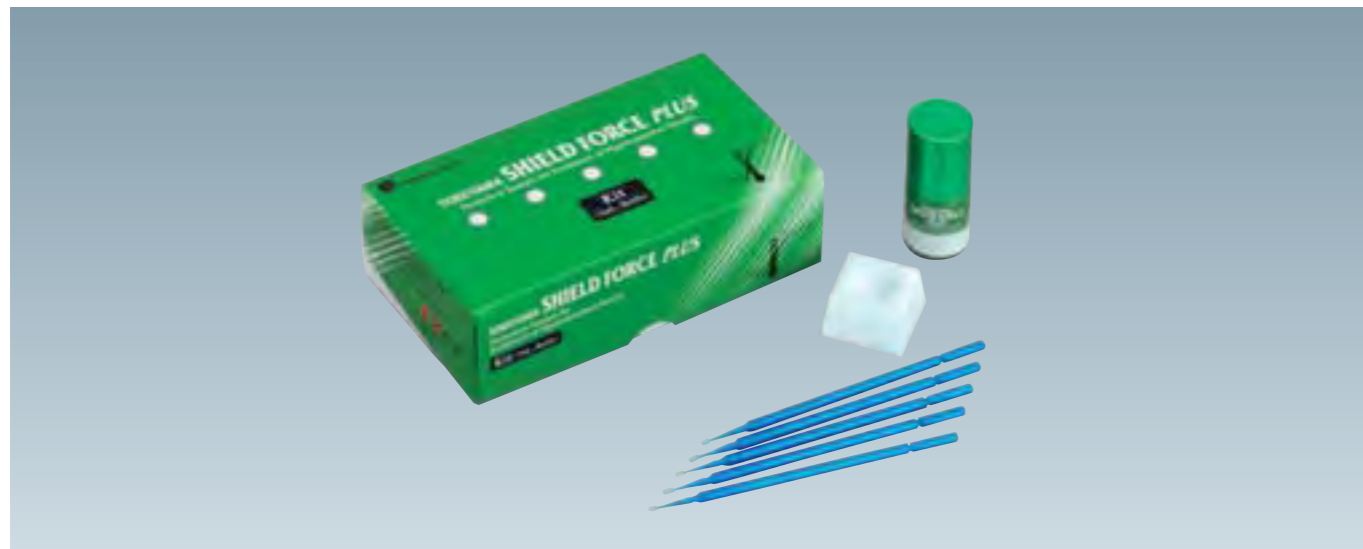
PRODUCTS PACKAGES AVAILABLE

Kit: Powder (20g), Liquid (6.4mL), Powder measuring scoop, Mixing pad

Refill: Powder (20g)
Liquid (6.4mL)

TOKUYAMA SHIELD FORCE PLUS

Protective Sealant for Treatment of Hypersensitive Dentin



INDICATIONS

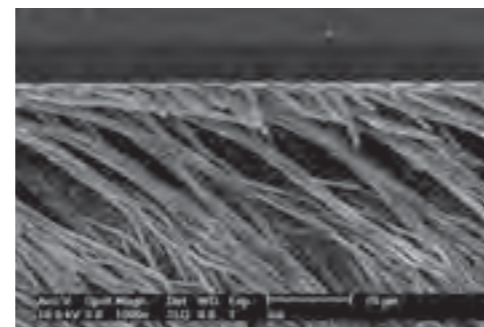
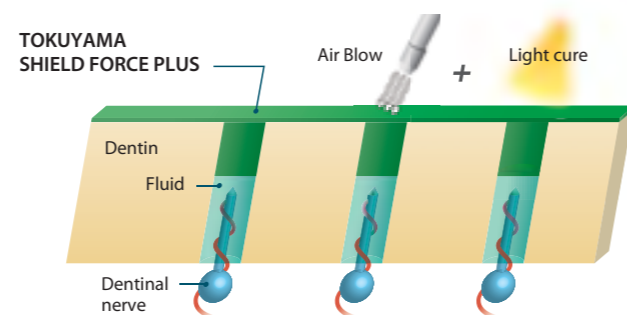
- Treatment of hypersensitive dentin
- Reduction of abrasion and erosion of exposed cervical dentin
- Alleviation and/or prevention of tooth sensitivity after tooth preparation for direct and indirect restorations

BENEFITS

- Quick and effective treatment of hypersensitive dentin
- Durable coating on exposed dentinal tubules
- Superior sealing of prepared tooth
- Simple procedure
- Thin film thickness

TECHNICAL INFORMATION

Sealed with resin tags and layers



Observation of resin tags in dentin treated with TOKUYAMA SHIELD FORCE PLUS (using an extracted human tooth)

CLINICAL PROCEDURE



PRODUCTS PACKAGES AVAILABLE

Kit: Bottle (3mL), 25 Disposable applicators (superfine), Dispensing well

Refill: Bottle (3mL)

TOKUYAMA REBASE II

Chairside Hard Denture Reline Material



NORMAL Kit



FAST Kit

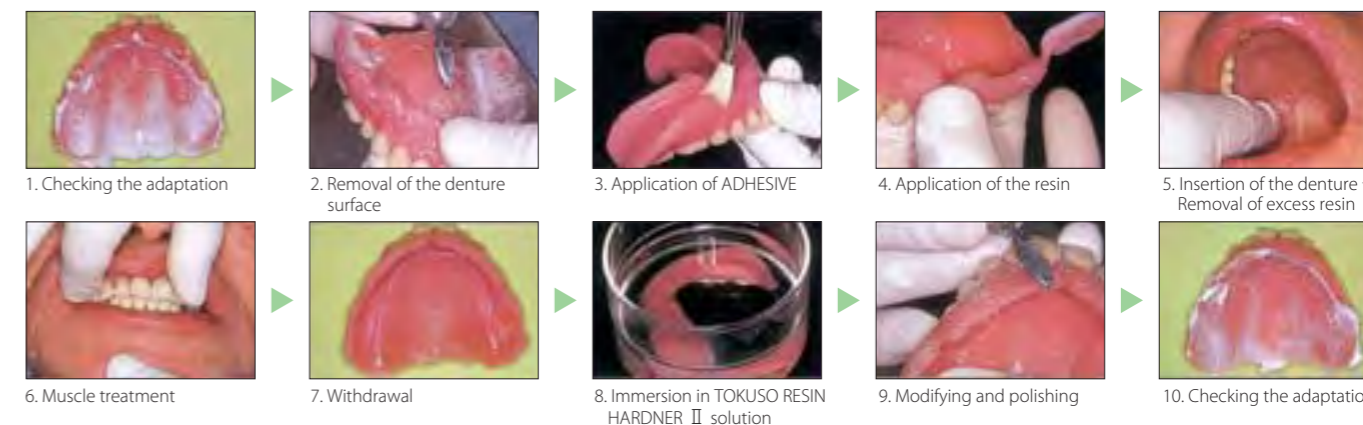
INDICATIONS

- Hard denture relining
- Partial denture repairs

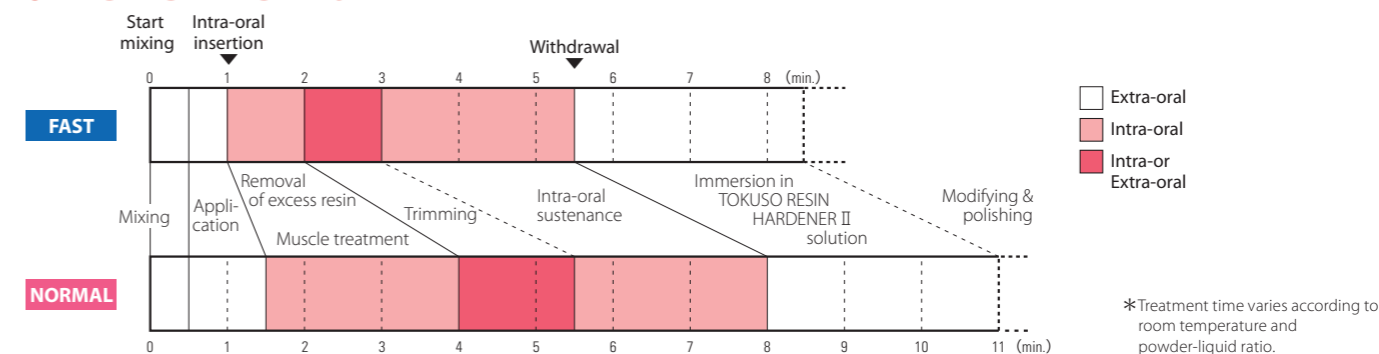
BENEFITS

- Lower chemical irritation
- Lower heat generation
- Easier polishing
- Durability
- Accurate adaptation of the denture
- One-appointment procedure
- Saves lab costs

CLINICAL PROCEDURE



STANDARD HANDLING TIME



PRODUCTS PACKAGES AVAILABLE

Kit (Normal or Fast): Powder (80g), Liquid (50mL), Adhesive (15mL), Measuring cup, Dropper, Rubber cup, Spatula, 2 Plastic cups, 2 Brushes, TOKUSO RESIN HARDNER II, Spoon

Refill: Powder Normal/Fast (80g), Liquid Normal/Fast (50mL), Adhesive (15mL), TOKUSO RESIN HARDNER II (48g)

SOFRELINER TOUGH M(Medium)/S(Soft)

Silicone-based soft denture liner



M Kit



S Kit

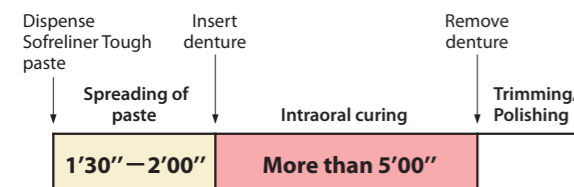
INDICATIONS

- Pain caused by sharp ridges of alveolar bone and atrophy of mucosa
- Poor retention caused by extreme ridge atrophy
- Major undercuts or maxillary/mandibular tori
- Retention of over dentures before the final attachment is placed
- Temporary relining or tissue conditioning(S)

BENEFITS

- Excellent Durability
- Strong adhesion
- High tear/stain/wear resistance
- Auto-dispensing system/No hand mixing

STANDARD HANDLING TIME

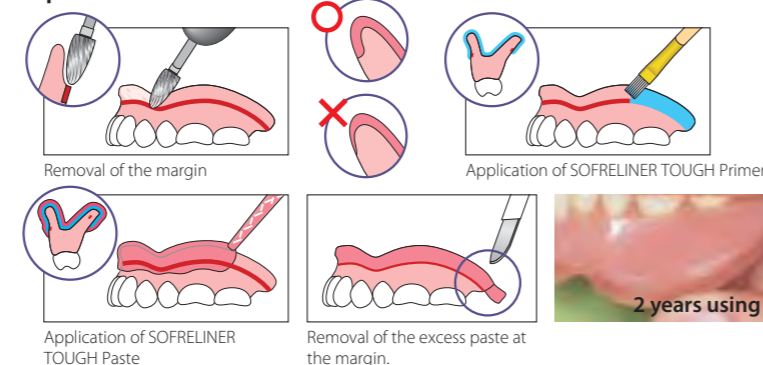


TECHNICAL INFORMATION

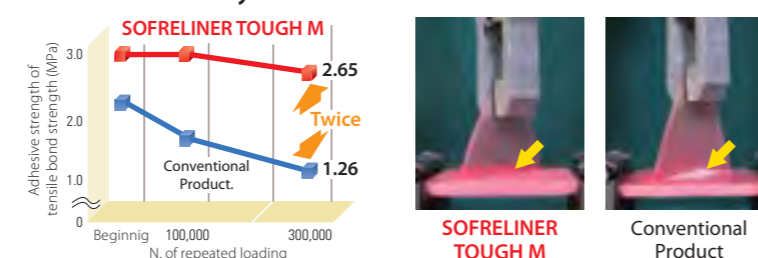
Softness



Tips for Better Adhesion



Adhesive Durability Test



PRODUCTS PACKAGES AVAILABLE

Kit (M): Paste (base/27g and catalyst/27g), Primer (10mL), Drip-Cap for Primer, 10 Mixing tip XS, Spatula, Brush, Plastic cup, Shape adjustment point (White), Finishing point (Brown)

Kit (S): Paste (base/27g and catalyst/27g), Primer (10mL), Drip-Cap for Primer, 10 Mixing tip XS, Spatula, Brush, Plastic cup, Coarse point (Black), Finishing wheel (Brown)

Refill: Paste M/S (base/27g and catalyst/27g), Primer (10mL), Mixing tip XS (50 pcs), Mixing tip S (50 pcs), Shape adjustment point (White, 3 pcs, for M) Finishing point (Brown, 6 pcs, for M) , SOFRELINER TOUGH S FINISHING SYSTEM (Coarse Pont (Black), 5 Finishing wheel)

SOFRELINER MS/S

Silicone-based soft denture liner



MS Kit



S Kit

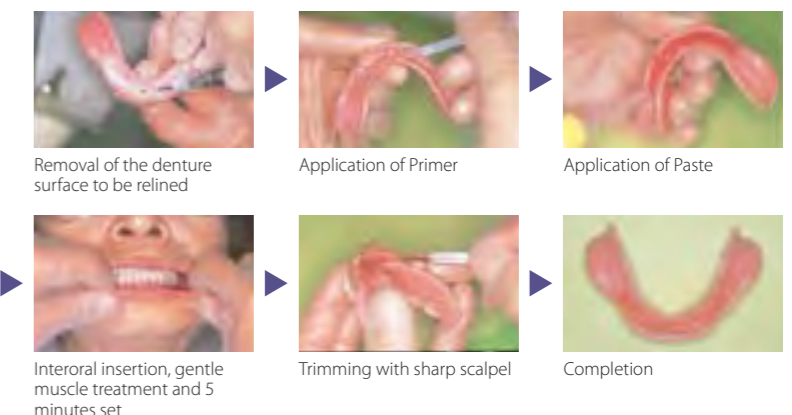
INDICATIONS

- Pain caused by sharp ridges of alveolar bone and atrophy of mucosa
- Poor retention caused by extreme ridge atrophy
- Major undercuts or maxillary/mandibular tori
- Retention of over dentures before the final attachment is placed

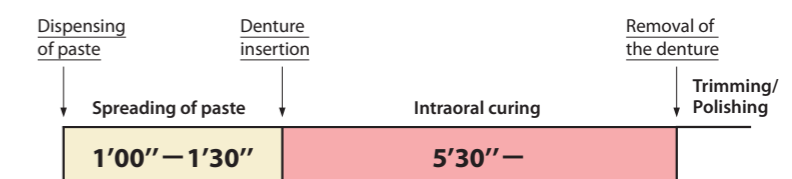
BENEFITS

- Durability and higher tear resistance (MS)
- Higher stain resistance (MS)
- Extremely soft feel and greater comfort (S)
- No odor, taste or chemical irritation
- Auto-dispensing system/No hand mixing

STANDARD PROCEDURE



STANDARD HANDLING TIME



PRODUCTS PACKAGES AVAILABLE

Kit MS (Medium Soft)/S (Soft): Paste (base/27g and catalyst/27g), Primer (10mL), 5 Mixing tips XS, 5 Mixing tips S, Spatula, 2 Brushes, 2 Plastic cups, Steel bur T-101, 5 Finishing wheels

Refill: Paste MS/S (base/27g and catalyst/27g), Primer (10mL), Mixing tip XS (50 pcs), Mixing tip S (50 pcs), Sofreliner Finishing System (1 Steel bur, 5 Finishing wheels)

SILICONE REMOVER

Agent for Removing Silicone-based Reliner from Acrylic Denture



INDICATIONS

- Removal of old silicone denture reline
- Removal of silicone rubber impression materials from the impression resin trays

BENEFITS

- Ease of use
- Removes old silicone reline from the acrylic denture easily
- Works fast and saves time when removing old denture reline
- No mess, unlike when grinding the material

PRODUCTS PACKAGES AVAILABLE

Bottle (7mL)

TOKUSO REBASE MR. BOND

Metal Primer for Self-Curing Acrylic Resin



CLINICAL APPLICATIONS

- Relining of metal plate dentures
- Bonding of self-curing acrylic resins with non-precious metals

BENEFITS

- Strong adhesion
- Enables relining of metal dentures with acrylic denture liners

PRODUCTS PACKAGES AVAILABLE

Kit: Bottle (5.5mL), Plastic cup, 2 Brushes

Tokuyama Dental Corporation

38-9, Taitou 1-chome, Taitou-ku, Tokyo, Japan

TEL: +81-3-3835-2261 FAX: +81-3-3835-7224

URL: www.tokuyama-dental.com